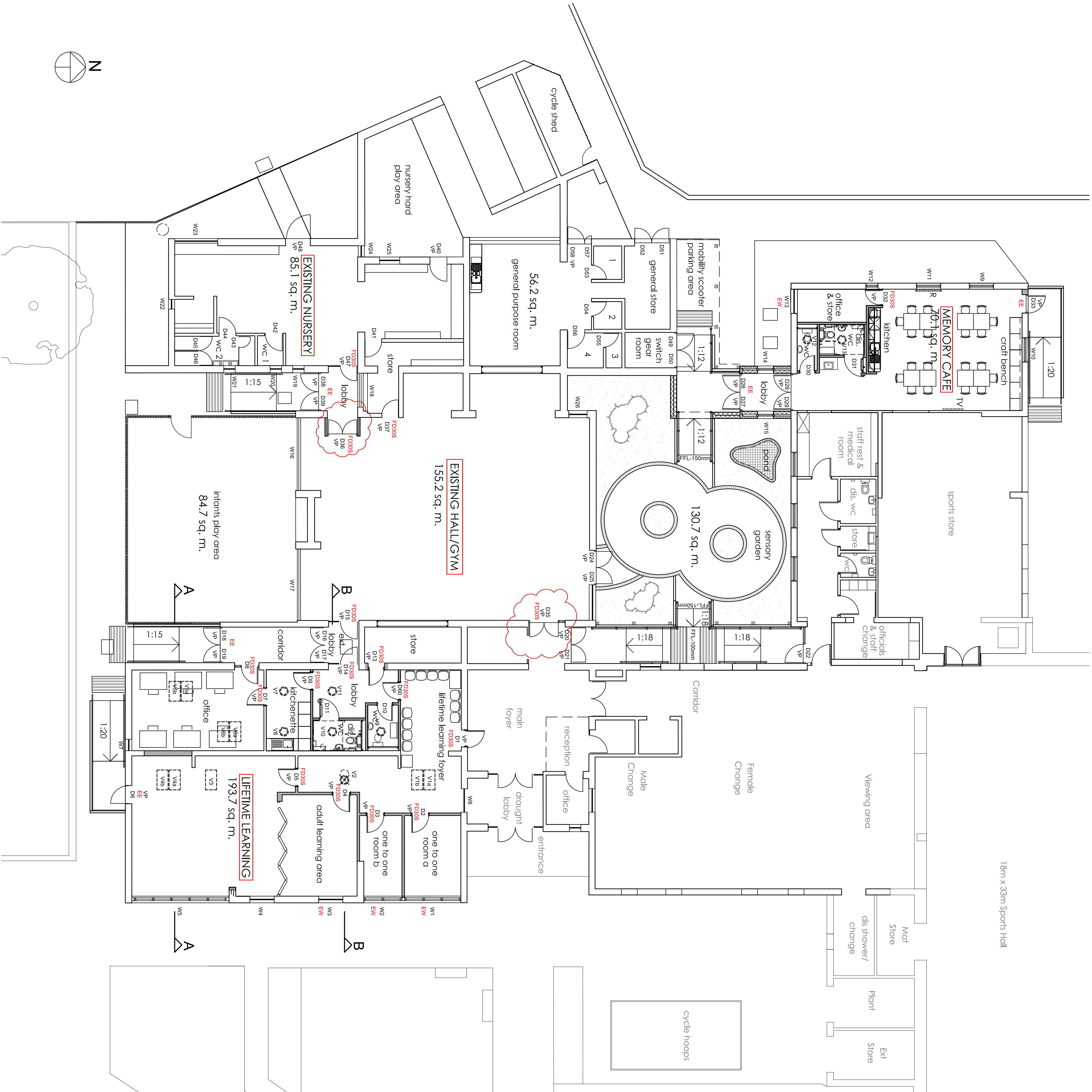


LIFETIME LEARNING 193.7 sq.m.	
FOYER	31.6 sq.m.
1-2-1 ROOM A	11.3 sq.m.
1-2-1 ROOM B	8.1 sq.m.
ADULT LEARNING AREA	18.6 sq.m.
LIFETIME LEARNING	52.0 sq.m.
OFFICE	26.1 sq.m.
KITCHENETTE	9.0 sq.m.
WC	3.4 sq.m.
DIS. WC	4.0 sq.m.
STORE	6.5 sq.m.
LOBBY	6.9 sq.m.
EXT. LOBBY	2.7 sq.m.
CORRIDOR	9.5 sq.m.
MEMORY CAFE 70.1 sq.m.	
MEMORY CAFE	53.5 sq.m.
OFFICE & STORE	6.3 sq.m.
DIS. WC	3.4 sq.m.
WC	2.3 sq.m.
LOBBY	4.6 sq.m.
SENSORY GARDEN 130.7 sq.m.	
SENSORY GARDEN	110.0 sq.m.
COVERED WALKWAY	20.7 sq.m.
EXISTING HALL / GYM 155.2 sq.m.	
INFANTS' PLAY AREA 84.7 sq.m.	
EXISTING NURSERY 85.1 sq.m.	
GENERAL PURPOSE ROOM 56.2 sq.m.	
GENERAL STORE	4.5 sq.m.
SWITCH GEAR ROOM	2.3 sq.m.
1	2.0 sq.m.
2	1.4 sq.m.
3	3.1 sq.m.
4	33.8 sq.m.

- SENSORY GARDEN:**
- Help will be sought from volunteer groups and Trecco Abbey Garden to select new planting to reflect the indigenous plants of the Isles of Scilly.
 - Ring-shaped path to fall away from centre for drainage at 1:40 max. cross-fall. Path to be designed to be wheelchair and disabled-buggy friendly and allow two people (carer and patient) to walk side-by-side.
 - Pond designed, built and maintained to guidelines in RoSPA "Water Safety Information Feb 2008".
- MEMORY CAFE:**
- Drainage to connect to existing mains.
- KITCHENETTE:**
- Mechanical extract ventilation (nominal airflow rates) 30 litres/second adjacent to a hob (if required) or 60 litres/second elsewhere
- NEW SANITARY ACCOMMODATION:**
- Mechanical extract ventilation (nominal airflow rates) 6 litres/second per WC or 3 air changes per hour
 - Where the kitchenette and sanitary accommodation is on internal room it shall have mechanical extract ventilation, and a permanently open air inlet having a minimum free opening area of 9000mm². The mechanical extract ventilation shall have an overrun time of not less than 15 minutes and shall be activated either automatically or manually (e.g. by the operation of a light switch), and discharge directly to the exterior of the building.
- EXTERNAL ACCESS RAMPS:**
- 1200mm min. landing at top and bottom of ramps clear of any door swing or projection
 - 1:60 fall away from door on top landing for drainage.
 - (1:40mm max. cross-fall)
 - Ramps to be no greater than 1:12 (see plan for details).
 - Clear, unobstructed width between handrails to be no less than 1500mm.
 - 100mm min. high kerb to open sides of ramps.
 - Handrail to be provided on both sides of ramps, to extend 300mm min. at top and bottom of ramp.
 - 800mm min. length of cordway hazard paving 400mm from foot of ramps, to visually contrast with ramp surface.

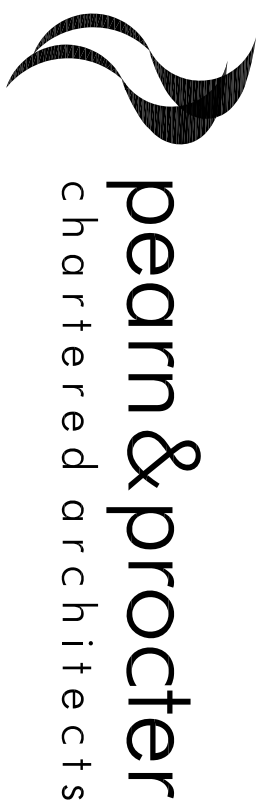
GENERAL NOTES:-

- All new and existing render to be painted white.
- Existing fire alarm and smoke detection system to be altered and adopted. (Details to be supplied by M+E consultant.)
- Where vision panels or glazing is required within a fire door then the glazing must be fire resistant of equal rating to the door.
- Existing heating system to be removed and replaced by electric thermostatic limeable radiators.
- Upgrade all insulation in roof space to achieve min. U-value 0.16W/m² K in all areas and taken down to link with cavity wall insulation.
- Corner of existing external wall to be removed and replaced in 440x215mm blockwork in new position and rendered to match existing.
- All external doors within area of new works to have ramp to achieve level threshold of entrance, gradient no greater than 1:12. (See Section C-C for typical details.)
- Where existing paving is to be removed, slabs will be cleaned and reused to form new paved areas, unless specified otherwise.



- VP Vision panel
- FD385 Fire door with 30 minutes integrity and seals
- EE Emergency exit
- EW Escape window
- Velux C04 GGU 550x78mm centre-pivot roof light
- Velux TWR rigid sun tunnel
- Velux TWR flexible sun tunnel with ZTR extension

REBURISHMENT OF CARN GWAVAL PRIMARY SCHOOL, ISLES OF SCILLY



Old Court Kaborough, Plymouth PL6 7BD Tel: 01752 704849 Fax: 01752 746827 email: pjohn@pearnprocter.co.uk website: www.pearnprocter.co.uk

LAYOUT PLAN AS PROPOSED

BUILDING REGULATIONS

scale	1 : 100 @A1	drawn by	PAC	drawn file	P1214fp01
date	29 : 05 : 12	checked by	P1214-111-C	drawing number	